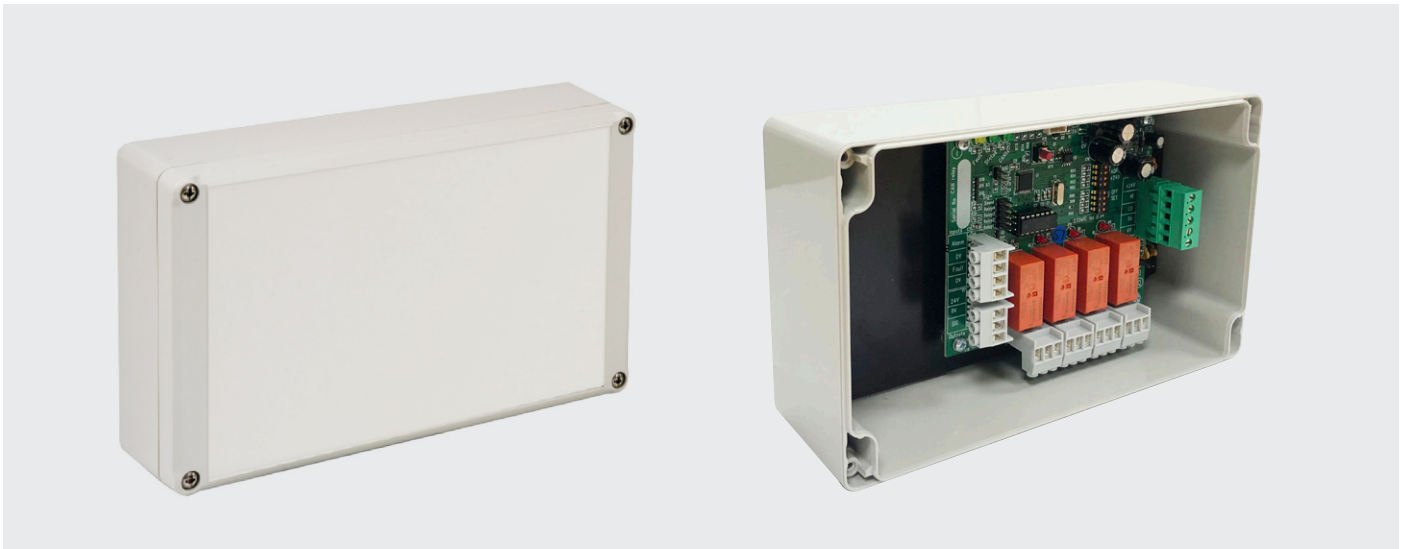


CAN RELAY UNIT

4 WAY REMOTE CAN RELAY



CANbus Addressing Switches (S2)

To allow the 4 CAN relays to communicate with the Combi unit it must have a unique address between 240 and 255. This can be selected using the **S2** address switches. The selected address will be recognised by the Combi system automatically on power up. This can be checked in engineers menu 27 'Set up Network'.

Relay Option Switches (S1)

The CAN board must be set up to copy a group of 4 relays on one of the two 32 way external relay boards. **S1** should be used to select which group of 4 they will copy. To test relays link across **J2** (Test), remove after test.

Relays:

x4 – volt free – SPCO 3A/230vAC

Input Terminals:

Alarm / Fault – short to 0v

Output Terminals:

24vDC @300mA

SIG sounder driver (mutable) global or relay follower 1–4, see **JS** jumper selection

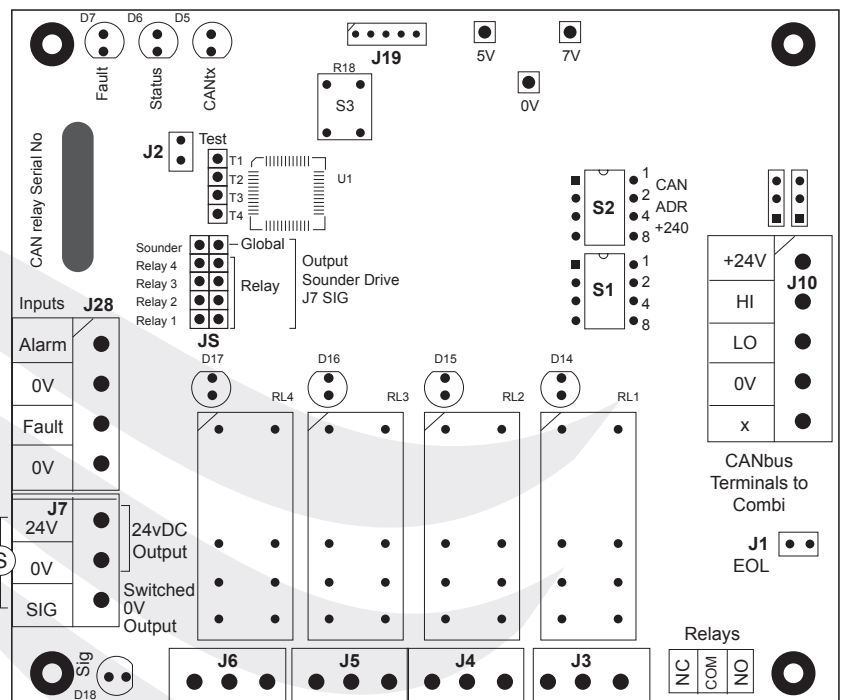
EOL (end of line jumper) – select **J1**

Enclosure:

Polycarbonate IP65 – 200 x 120 x 56mm

Order Code:

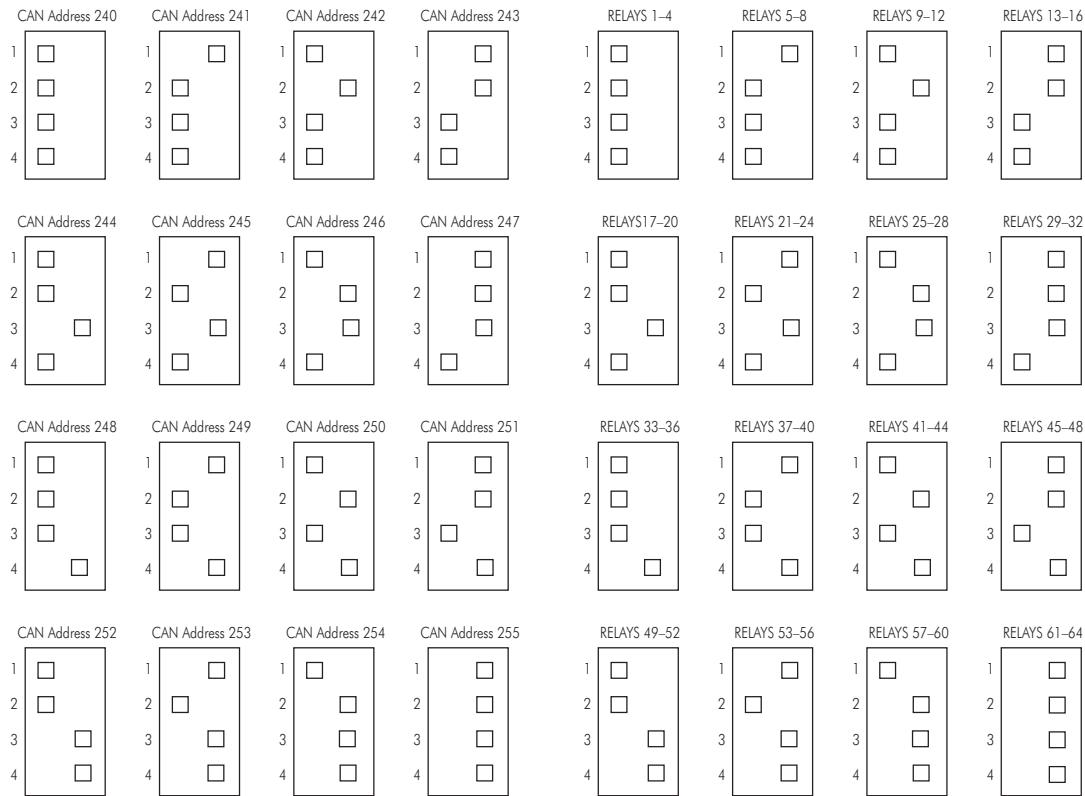
160–205



CAN RELAY UNIT

4 WAY REMOTE CAN RELAY

CAN ADDRESS ON S2



SOUNDER OPTIONS

- J8
Sounder activates with Relay 1
 - J9
Sounder activates with Relay 2
 - J11
Sounder activates with Relay 3
 - J12
Sounder activates with Relay 4
 - J13
Sounder activates with controller sounder
- These can be used individually or in combination.

Note: only valid for PCB Issue E Software Version 2 .1 and above

