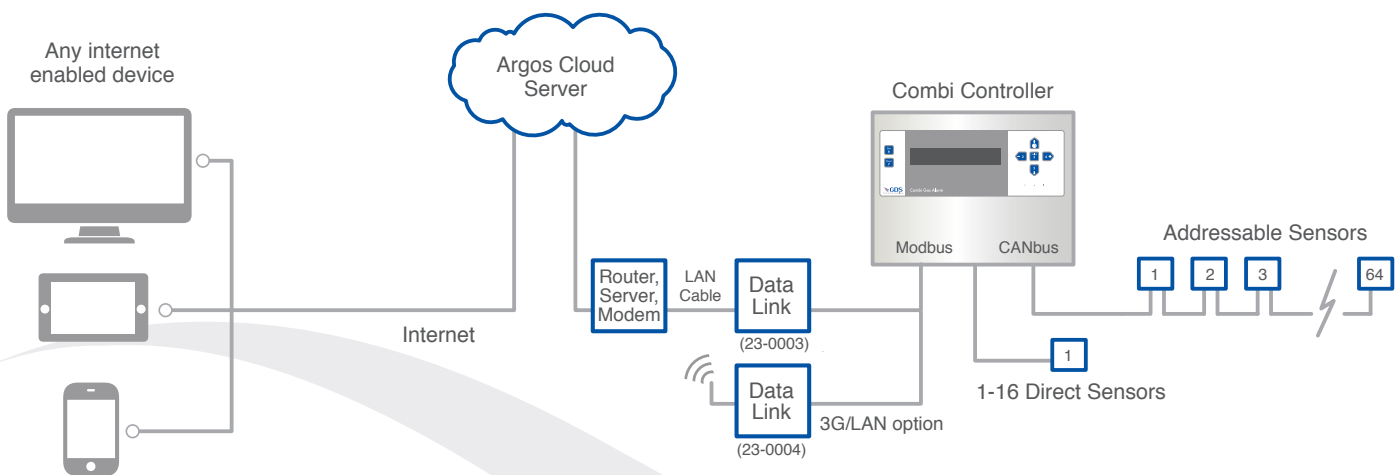


- Up to 128 log parameters per data link unit
- 24/7 global remote access and control of a Combi Addressable Network
- Real-time text & email notification of alarm or fault conditions
- Programmed scheduled messaging service
- Remote emergency maintenance
- Remote data transfer
- Customisable dashboard graphical interface with site image
- Powered directly from the Combi controller
- Secure access rights for different user levels
- Data Storage & retrieval – historical data logs and live readings accessible from any web enabled device
- 3G/LAN data transfer using standard sim card for wireless operation - alternative option

The GDS Data Link allows remote management of an on-site Combi Gas Detection System over a secure connection from any pc with internet access. A secure connection is created via the cloud to the Data Link module, which in turn is hard-wired to the Combi controller via a 4-core power/data cable to source the DC supply and the Combi MODBUS data.



### Power requirement

12 ~ 48vDC 24v nominal

### Ethernet

10/100Mbps/sec

### Power consumption

4.5W

### Operating temperature

-10 to + 50°C

### Enclosure

ABS-IP65

### Dimensions (mm)

L200 x W150 x H80

### Weight

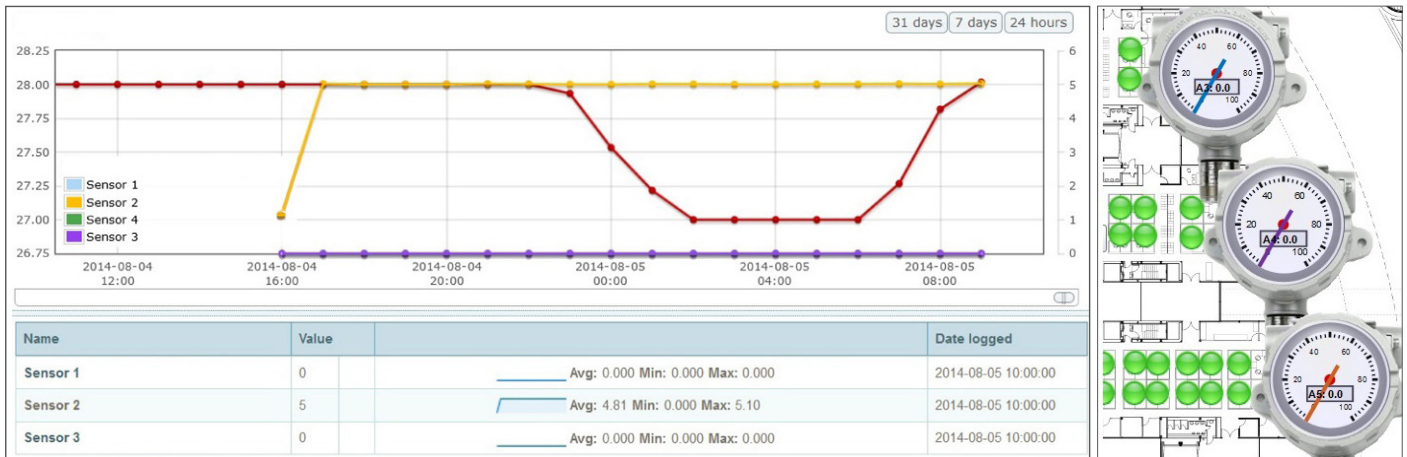
840gms

### 3G option

Standard SIM card required. See [netbiter.com](http://netbiter.com)

A full suite of online information is available through web-based management tools, including dashboard design by GDS to suit customer site layouts, providing reports, alarm conditions with exact sensor locations.

## A full range of selectable historical/live data



## Trend Analysis & Graphical Representation of Logged Data



## Remote adjustment

- Enable/Disable 1-64 addressable sensors
- Enable/Disable 1-16 direct sensors
- Inhibit 1-64 addressable sensors
- Inhibit 1-16 addressable sensors
- Reset panel
- Accept alarm
- Other adjustments by customer request



C939

This document is not contractual and the equipment specification may be modified at any time without prior notice.

