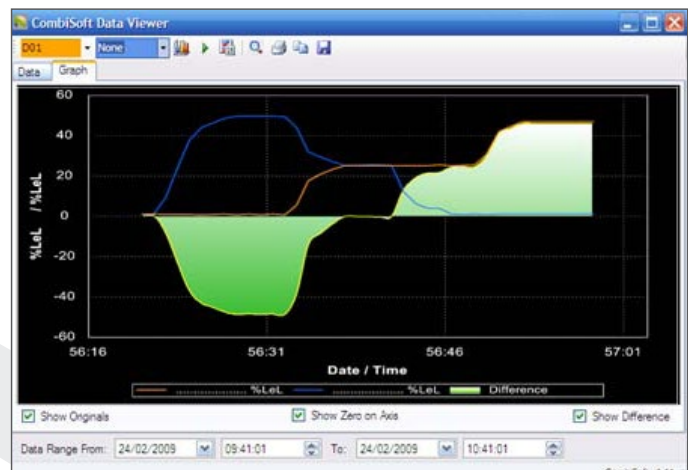
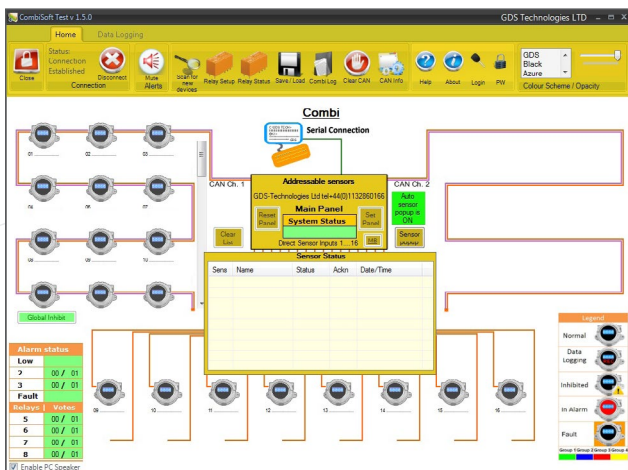


- Stores readings from Combi sensors on a computer's hard drive
- Simple to set-up and install with a serial connection 'plug and play' auto-detection
- Records unlimited readings from up to eighty attached sensors simultaneously at variable intervals from one second upwards
- Data can be output to spreadsheets like MS Excel with ease
- Generates audible and visual alerts of fault and alarm events
- Full configuration options for sensors and relays with easy text input, making setup of the Combi system fast and simple from PC
- Zero and calibration of sensors as well as the ability to inhibit faulty sensors
- 'Sensor status' notification list of events with date/time and acknowledgment status
- Three different password protected access levels for viewers/engineers/administrators
- Automatic pop-up of large sensor icons on top of screen saver or any other programs for sensors that have gone into alarm or fault state, giving gas level, location and alarm status etc.

GDS Technologies CombiSoft is primarily data logging software to store readings from a Combi system on an attached Windows based PC. Used for data acquisition, monitoring and configuration of the Combi addressable gas detection system, CombiSoft is a versatile tool for communicating with the GDS panel from a computer. It allows the user to log unlimited data from all attached sensors on a single Combi system as well as control the system including calibration of sensors.

The software is simple to install on a PC with Windows 7/10 and requires a single cable connection to the Combi panel (USB to serial).



CombiSoft Viewer

The Viewer is a separate software tool, used to display and analyse previously logged data as well as view live gas readings in graphical format. Two gas levels can be viewed simultaneously with optional difference displayed. Live view and 'last hour' live views are available with easy scaling and scrolling of recorded data.

This document is not contractual and the equipment specification may be modified at any time without prior notice.

